

SYNDAL SOUTH PRIMARY SCHOOL

Address: 14 Montgomery Ave Mount Waverley VIC 3149

School Office Phone: (03) 9802 5277

Parking: School will allocate two carparks for the presenters in the Staff Carpark.

G.A.T.E.WAYS TIMETABLE FOR SYNDAL SOUTH PRIMARY SCHOOL	
9.00am	School begins. Students attend roll call with their class teacher.
9.10am – 10:40am	AM session (1 hr & 30 mins)
10.40am – 11:10am	Recess
11.10am -11.50am	AM session continues (40 mins)
	**Swap Workshops
11.50am -12.50pm	PM session begins (1hr)
12.50pm - 1.50pm	Students return to their class for lunch
1.50pm – 3.00pm	PM session continues (1 & 10 mins)
3.00pm – 3.05pm	Students return to class.

School Bell Times:

9.00 am Start

10.40 to 11.10 am Recess

12.50 to 1.50 pm Lunch

3.30 pm Finish

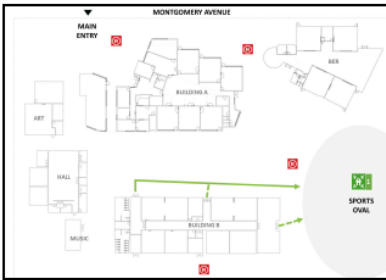
Venue Information Next Page

EVACUATION POINT

Evacuation Diagram

Date Issued: June 2025
Building Reference: Block B

Assembly Area



Syndal South Primary School
14 Montgomery Avenue
Mt Waverley VIC 3149
(Entry at cnr of Vasey Avenue)



CLASSROOM 10



Legend	
	Designated Exit
	Evacuation Path
	Primary Assembly Point
	Shelter-In-Place
	Fire Hydrant
	Fire Hose Reel
	Powder Extinguisher
	Fire Blanket
	First Aid Kit
	Gas Main
	Switchboard
	Fire Main Water Isolation Point
	Toilets
	PA System

Venue Information Next Page

Evacuation Diagram

Date Issued: June 2025
 Building Reference: Block B

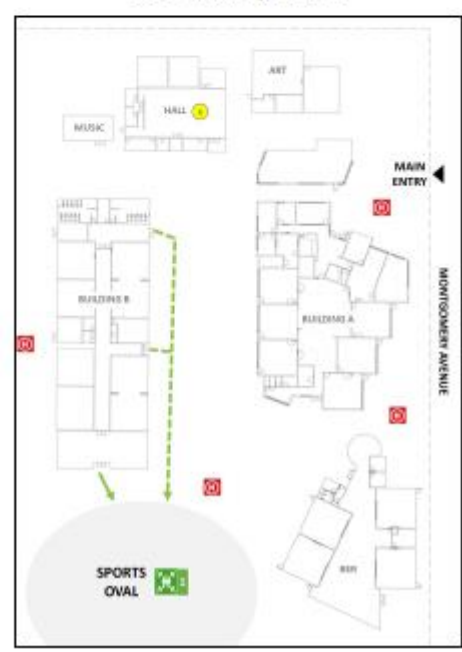


CLASSROOM 16



Syndal South Primary School
 14 Montgomery Avenue
 Mt Waverley VIC 3149
 (Entry at cnr of Vasey Avenue)

Assembly Area

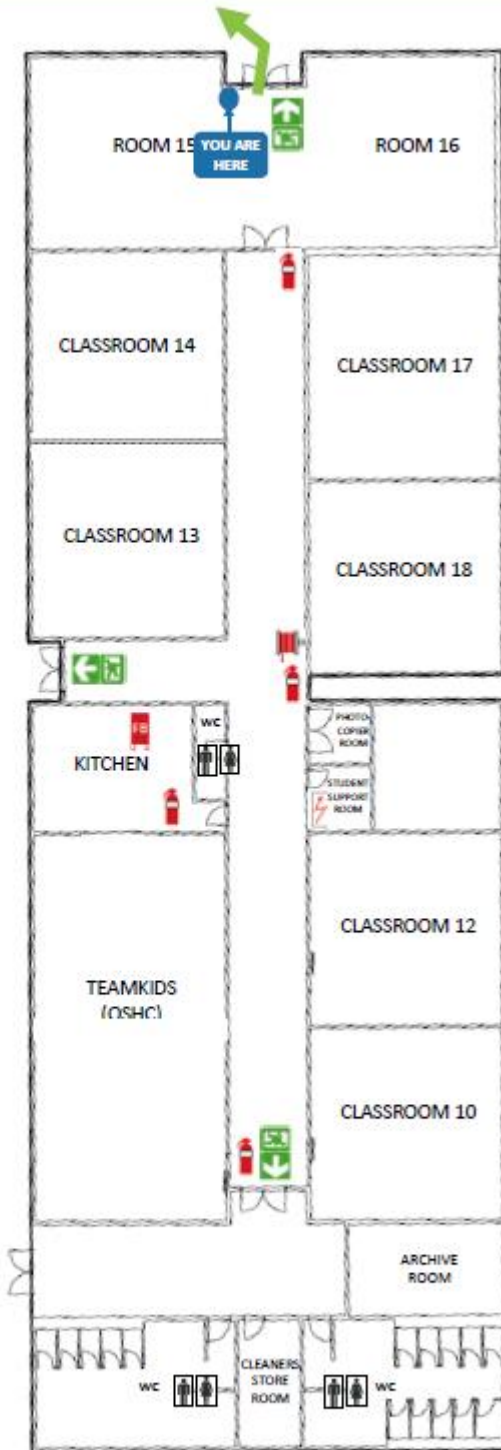


Legend

Venue Information Next Page

Evacuation Diagram

Date Issued: June 2025
Building Reference: Block B



CLASSROOM 15



Syndal South Primary School
14 Montgomery Avenue
Mt Waverley VIC 3149
(Entry at cnr of Vasey Avenue)



Assembly Area



Legend

Designated Exit	Evacuation Path	Primary Assembly Point	Shelter-In-Place	Fire Hydrant	Fire Hose Reel	Powder Extinguisher	Fire Blanket	First Aid Kit	Gas Main	Switch-board	Fire Main Water Isolation Point	Toilets	PA System